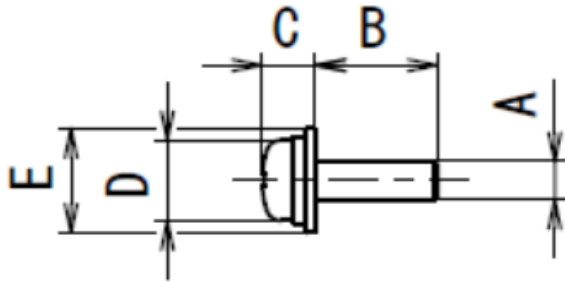


## NJRL screw reference table

Within the range of the screw sizes and lengths below, there may be unique screw shapes or structures that may not be compatible with the feeder unit.

If you use a tapping screw with a sharp point or a rough pitch, the wear may be severe.

It is desirable that the B dimension is larger than the D and E dimensions.



Supports Pan/button head, cylinder & counter sunk screws

| Screw feeder series | Screw size | Screw shaft diameter A (φ) | Screw shaft length B (mm) | Screw head thickness C (mm) | Screw head diameter D (φ) | Washer diameter E (φ) |
|---------------------|------------|----------------------------|---------------------------|-----------------------------|---------------------------|-----------------------|
| NJRL                | φ2.0       | 1.8~2.1                    | 3.2~25                    | 0.5~5.5                     | 3.0~3.5                   | 3.0~8.0               |
|                     | φ2.3       | 2.1~2.4                    | 3.7~25                    | 0.5~5.5                     | 3.0~4.0                   | 3.0~8.0               |
|                     | φ2.6       | 2.4~2.7                    | 4.2~25                    | 0.5~5.5                     | 3.6~4.5                   | 3.0~8.0               |
|                     | φ3.0       | 2.8~3.1                    | 4.8~25                    | 0.5~5.5                     | 4.0~5.5                   | 3.0~8.0               |
|                     | φ3.5       | 3.3~3.7                    | 5.6~25                    | 0.5~8.0                     | 4.8~8.0                   | 4.8~12                |
|                     | φ4.0       | 3.8~4.1                    | 6.4~25                    | 0.5~8.0                     | 5.4~8.0                   | 5.4~12                |
|                     | φ5.0       | 4.8~5.1                    | 8.0~25                    | 0.5~8.0                     | 6.2~10.0                  | 6.2~12                |

Compatible with washer thickness 0.4 to 1.0 mm.  
Dedicated for all screw types.

## Future of Assembly