

# Plug-n-Produce

## Screw-driving solution



*future of assembly*

Start automating your manual assembly processes today

&

Be in charge of your automation journey



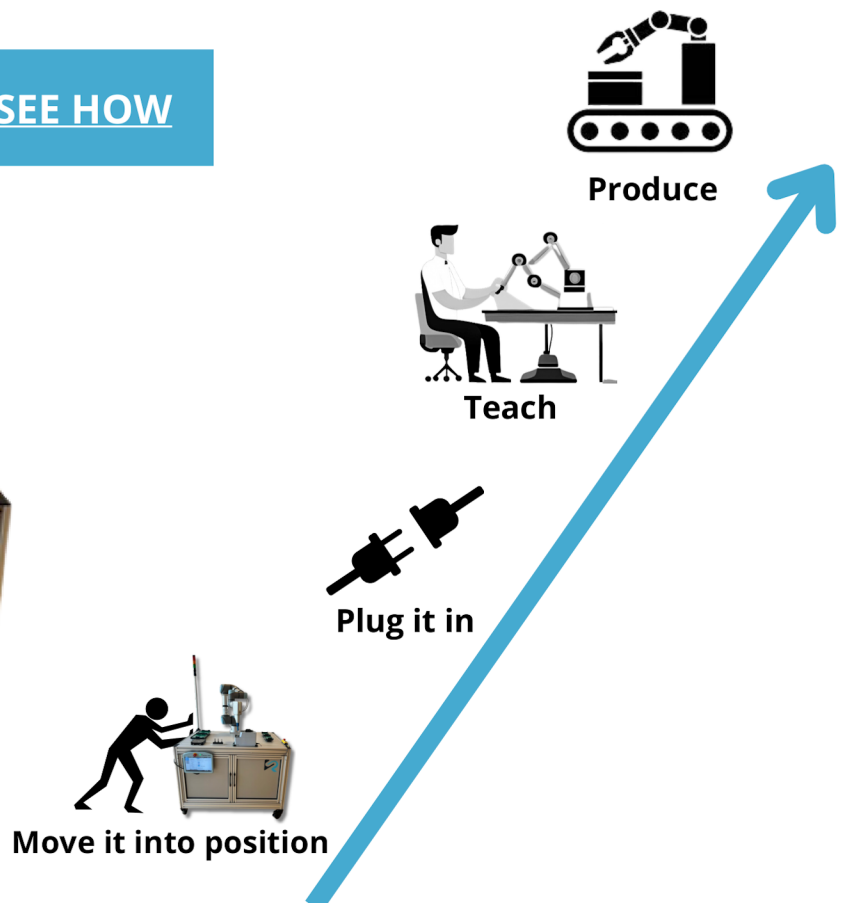
- **Pre CE certified** – no need for additional risk assessment
- **Truly collaborative** – no extra safety needed
- **Plug and produce** – turn-key solution
- **ROI** – Short Return On Investment
- See it in action

## Introducing our revolutionary Plug-n-Produce!

- ✓ Plug-n-produce: Experience smooth integration and effortless setup with our user-friendly solution. No complicated installations or configurations are required.
- ✓ CE-marked: Our Plug-n-Produce has met the stringent European safety and quality requirements, guaranteeing its reliability and compliance.
- ✓ Manpower: Free up workers for other tasks and thereby alleviate the lack of manpower.
- ✓ Highest safety: Our Plug-n-Produce ensures the utmost safety, meeting the highest industry standards. With us, you can focus on your work without worrying about any compromises.
- ✓ Improve quality: Elevate your production standards and deliver the best results with our cutting-edge technology. With this, defects will be significantly reduced.
- ✓ Ensure Traceability: Capture and store critical process data, enabling you to make informed decisions and track performance over time. Moreover, you can gain valuable insights and optimize your operations by accessing real-time process data with ease.
- ✓ Improve output: Boost your productivity to new heights and maximize efficiency with our innovative Plug-n-Produce.
- ✓ Bit-changer: Adapt to different screws and enhance versatility with our advanced bit-changer feature ultimately making your job simpler.
- ✓ OPC-UA: Enjoy seamless global connectivity, and access your Plug-n-Produce remotely from anywhere around the globe.



[SEE HOW](#)



# INCLUDED



future of assembly

## Table 1200X800



Sturdy Mobile Platform  
Easy to setup fixtures

## SD35/SD70



All-in-one screwdriving solution

## SpinBridge

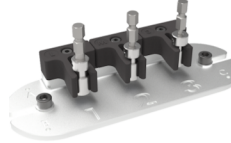


Integrated advanced data tracking of past and present insertion data.



OPC-UA explained  
Retrieve data to your system  
\*Optional

## Bit changer



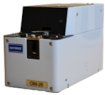
Streamline the bit-changing process for greater efficiency

## SpinMount



Easily switch between End-Of-Arm Tools and optimize your assembly processes.

## Screw feeder



Streamline the supply of screws

## SpinDash-Board



Real-time data tracking

## UR3e/5e/10e



Seamlessly integrate into a wide range of applications and delivers endless automation possibilities.

## Emergency Stop Button



## Signal Column



Specifications	PP35	PP70
Bit drive:	1/4"/6.35mm hexagonal 50mm	1/4"/6.35mm hexagonal 50mm
Screw capacity:	M2-M8	M2-M8
Screw length within full safety:	35mm	35mm
Torque range:	0.15 - 3.5 Nm	0.15 - 7 Nm
Speed range:	15 - 750 rpm	15 - 375 rpm
Buttons at table:	1x Emergency button 1x Start button	1x Emergency button 1x Start button
Digital interface:	URCap included OPC-UA 40451-1	URCap included OPC-UA 40451-1
Power:	220/120 V - (50/60hz) 340W	220/120 V - (50/60hz) 340W
ESD Safe:	IEC 61340-2-1:2015	IEC 61340-2-1:2015
Dimension:	1200 x 800 x 900	1200 x 800 x 900
<u>Weight</u>		
SD35/SD70:	2.3kg	2.4kg
UR3e/5e/10e:	11.2kg/18.4kg/33.5kg	11.2kg/18.4kg/33.5kg
Screw feeder:	3kg	3kg
Table:	85kg	85kg





## Customers:



## ***FUTURE OF ASSEMBLY***

*Our mission is to revolutionize screw-driving in assembly through a truly safe employee-robot collaboration.*

*We aim to close the gap between humans and robots in assembly lines by introducing innovative and smart collaborative tools that improve working conditions among employees while at the same time increasing assembly quality and output.*

*With our tools, we provide benefits for both employees and manufacturers.*

***Let's work together on the future of assembly!***

## ***CONTACT US***

**Mail:**

info@spin-robotics.com  
sales@spin-robotics.com

**Company no:**

+ 45 63 12 12 00

**Website:**

plug-n-produce.com

Niels Bohrs Allé 185  
5220 Odense, Denmark